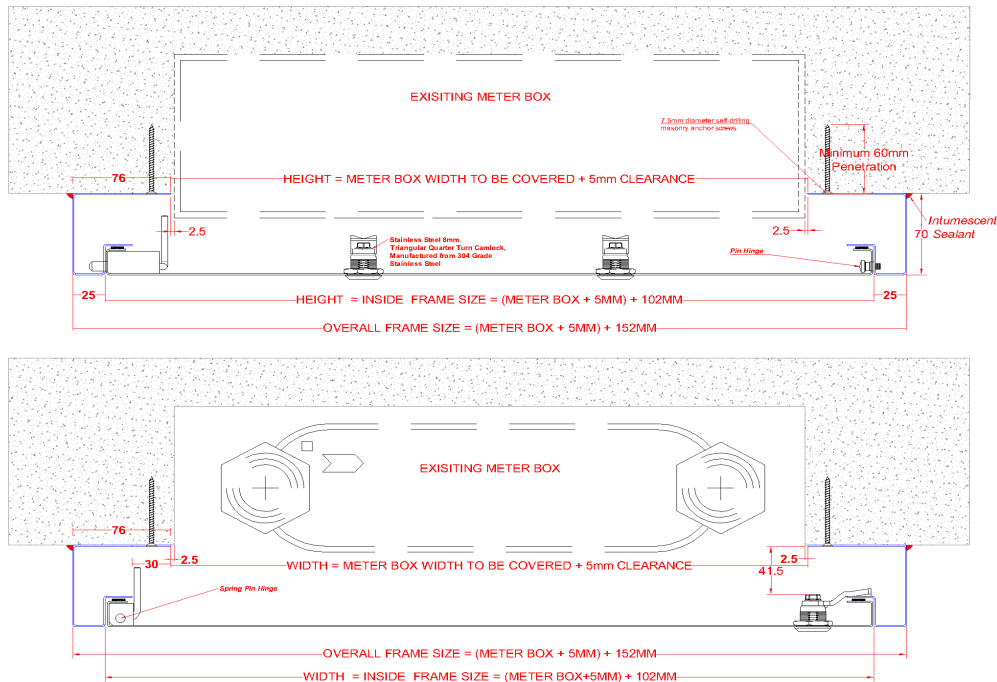




Datasheet

R16-120-MD-PF-L34A

Metal Faced Access Panel - Picture Frame



Walls & Ceilings



No Airtight Rating



No Acoustic Rating



2 Hour Fire Rating



Picture Frame

Description

This Meter Box is designed to be surface mounted onto a structural membrane of a block wall system. It is manufactured with a 25mm wide picture frame. The Meter Box has a Metal faced door. The Meter Box door leaf is locked in place via an 8mm Triangular Electrical Cabinet Quarter Turn Lock as standard, other lock options are available upon request. The Meter Box is Powder Coated RAL 9010 30% Gloss. Other colours available upon request.

Tests

2 Hour Fire Rated for integrity up to 1098x598mm in a wall application tested in accordance with BSEN 1634-1: 2014 from the meter side (Rear).

Not Acoustic tested.

Not Air Pressure tested.

Not Smoke tested.

Seals

Draught Seals **NO** Smoke Seals **NO** Air Seals **NO** Acoustic Seals **NO** Intumescent Seals **YES**

Manufacture

The Meter Box is manufactured from Zintec Steel with a 0.9mm thick Door and a 1.2mm thick Frame.

Permitted Intumescent Sealants

Mann McGowan Pyromas A.

Fixing Type Details

7.5mm diameter self-drilling masonry anchor screws, minimum 60mm screw penetration into the wall.

Fitting

- 1) To remove the door from the frame, open the door & release the spring pin hinge. Pull door towards you and lift away from the frame.
- 2) Place the frame on top of the aperture ensuring the aperture is 5mm smaller than the panel size / back of frame opening size.
- 3) Fix the frame over the aperture using all fixing holes, ensuring it is square and flush with the wall.
- 4) Refit the door by locating the spring pin hinge ensuring this is fully located then close the door. Lock the door in place with key provided & ensure the door is flush when closed.
- 5) Lock the door with the key, ensuring it is flush with the frame.
- 6) Apply a minimum 5mm wide bead of sealant to seal the back of the frame to the wall ensuring all gaps between the meter box and wall are fully sealed.